



ARCHER ACADEMY RECRUITMENT 2017



“The school’s curriculum is a particular strength. It combines academic rigour with broad and deep coverage of the skills and knowledge needed to successfully progress onto higher education and employment.”
Ofsted, June 2015

The Archer Academy
Email: info@thearcheracademy.org.uk
Telephone: 020 8365 4110

Stanley Road Campus
Lower School years 7-9
Eagans Close
London N2 8GA

Beaumont Close Campus
Upper School years 10-11
3 Beaumont Close, The Bishops Avenue
London N2 0GA

Realising potential. **Inspiring creativity.** Engaging with our community.

Headteacher's welcome



As Headteacher one of my greatest responsibilities and priorities is the recruitment and development of staff. At the Archer Academy, we are working to build an exceptional school and to do that, of course, we need an exceptional, fulfilled staff team. I ask a lot from my staff, but in return I can promise extensive support and development opportunities, and the space and freedom to extend your skills which would be hard to find elsewhere.

Our vision for the Archer Academy is rooted in our desire to provide an outstanding, inclusive and aspirational education for local children that will prepare them for adult life. We cannot know exactly what the future will bring for our students, but by giving them a love of learning, adaptable skills and the determination to succeed, we will enable them to rise to whatever challenges they face.

We are significantly over-subscribed, with over 900 applications for entry in September 2017. We currently have 600 students in years 7-10, and are growing year on year, due to reach 750 students across years 7-11 by September 2017.

This is undoubtedly an exciting time to join the Archer Academy. We very much look forward to hearing from you and thank you for your interest in our school.

A handwritten signature in cursive script, which appears to read 'Lucy Harrison'.

Lucy Harrison
Headteacher

Our vision



Our three-fold vision for the Archer Academy is rooted in our desire to provide an outstanding, inclusive and ambitious education for local children, an experience that they will relish and that will prepare them for adult life. It underpins every aspect of life at the Archer Academy, and is the benchmark against which we measure our success.

Realising potential:

Helping students to achieve personally, socially and academically to the best of their abilities. Our outstanding teachers set high standards and challenge each and every student to fulfil their individual potential, both in their studies and through extra-curricular activities.

Inspiring creativity:

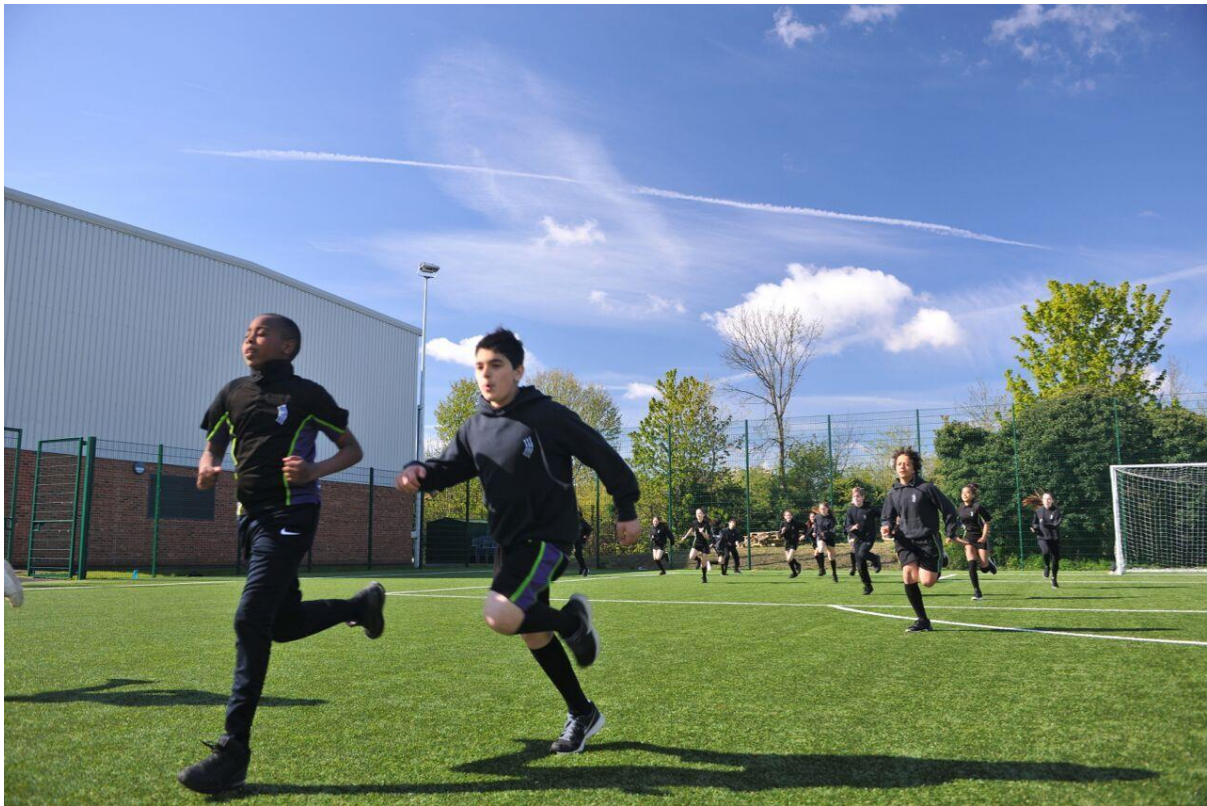
Providing an enjoyable and inspirational education that encourages students to be analytical, inventive and self-motivated. This commitment to creativity and analytical thinking applies across the whole curriculum as well as our extra-curricular opportunities.

Engaging with our community:

Ensuring that students respect others and value working with others for mutual benefit. The Archer Academy is a school with its roots in the community, and so responsibility and participation are fundamental to our ethos.

"We were particularly struck by very well-behaved students who barely gave us even a cursory glance, so engrossed were they in their literature books." Good Schools

Our campus school



We are a campus school, a model which we believe allows us to create a distinctive atmosphere on each site. Our students complete Lower School, Years 7 to 9, at our Stanley Road campus, a new state of the art building with incredible facilities and then graduate to our Upper School at Beaumont Close, just a few minutes' walk away, for Years 10 and 11.

Our campus model also reinforces the small, community feel of our school, with only 450 students at Lower School and 300 at Upper School. The next academic year will mark a pivotal moment in the journey of our school, in September 2017 we will be full for the first time, and in June 2018 our pioneer year group will take their first external GCSE examinations.

Our small class sizes of just 25 students per form helps our school feel friendly and personal.

“Students have a highly sophisticated understanding of how their behaviour impacts on learning and are on track to make outstanding progress.” Miranda Perry, School Inspector

Enrichment



We create a culture that celebrates achievement in all aspects of school life. For the school, good behaviour and firm discipline underpin a happy, respectful and productive learning environment.

We offer an extended day twice a week, during which students take part in extra-curricular activities. We provide a broad enrichment programme that covers: sports clubs and teams;

creative arts societies; media and politics; vocational and entrepreneurial societies; and voluntary work and awards schemes. Our enrichment programme will give you the chance to share your passion for a particular subject with students, whether it is fencing, ceramics or gardening.

“Senior leaders and governors base their work on a clear, simple vision which commits the academy to achieving the very best it can for its students. It is a vision shared by all who work and study in the academy.” Ofsted, June 2015

Trips



We offer our students an exciting programme of trips, with plenty of opportunity for our staff to join in. From our regular Cultural Society outings to the theatre, opera and ballet, to residential trips in the UK, Europe and the USA.

“I really believe that the Archer Academy is a role model for how schools should be and hope that other schools will look to you for inspiration.” Archer Academy parent

Location and facilities



The Archer Academy is an urban campus school in the leafy London suburb of East Finchley, with a lower school and sports facilities at Stanley Road and an upper school at Beaumont Close. The excellent sports facilities at Stanley Road have been supported by a £500,000 grant from the London Marathon Charitable Trust. Each campus is equipped with teaching facilities that its students need for their day to day lessons.

Community use of the facilities

We are committed to ensuring that the wider community benefits from the investment that has been made into our school. The 3G pitch and other outside areas, sports hall, dining room, dance studio, music rooms and some classrooms are available for hire outside of school hours.

“Leaders have set the very highest expectations for behaviour...[and] have ensured that this is a happy, safe academy where strong relationships underpin high expectations.” *Ofsted, June 2015*

How to apply

If, after reading the enclosed information, you would like to apply, please complete the application form which can be found at www.thearcheracademy.org.uk within the Join us tab.

Please submit your application by email to, Karen Neville, HR & Compliance Manager and do not hesitate to contact Karen on 020 8365 4110 ext. 725 with any questions.

Email: recruitment@thearcheracademy.org.uk

